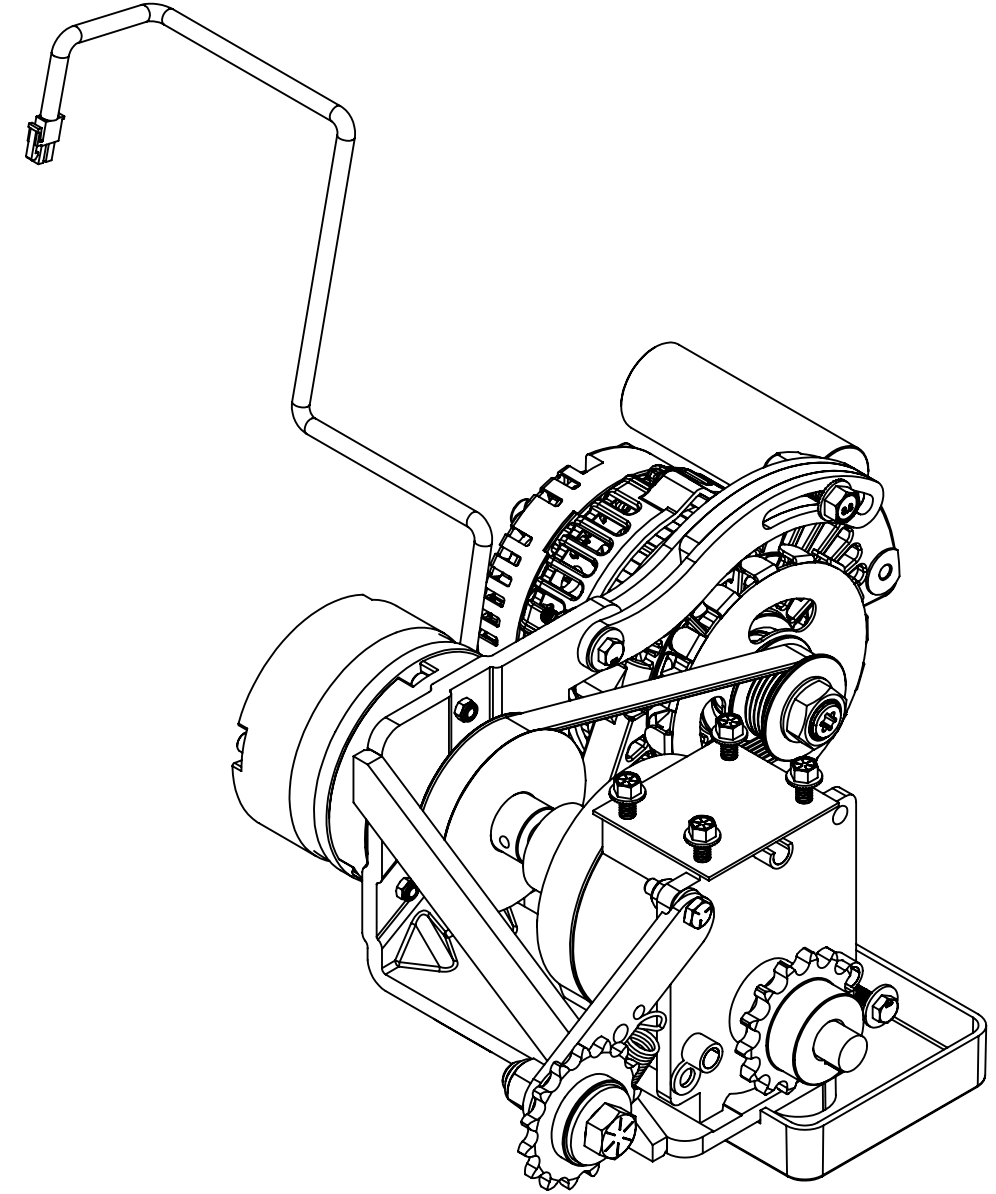


ITEM NO.	PART NUMBER	DESCRIPTION	QTY.
J	1	110-0610 BOLT, 1/2-13x2.5,HHC,HE,CS,ZI	1
	2	110-1833 NUT, 1/2-13, NYLOK HEX, CS, ZP, GR 8	2
	3	110-3098 NUT, 1/4-20, HEX, NYLOC	1
	4	110-3099 SCREW, 1/4-20, 1.5" HHCS, CS, ZP, GR 5	2
	5	110-3340 SCREW, 1/2-13, 2", HHCS, CS, ZP, GR 8	1
I	6	110-3478 SCREW, 1/4-20, 1", HHCS, CS, ZP, GR 5	1
	7	110-3602 SCREW, M5x0.8, 14mm, SHC, HK, SS	3
	8	110-3708 SCREW, 1/4-20, 5/8", HHFS, CS, ZP, Gr-8	6
	9	110-3970 SCREW,M6x1.0,35mm,HHC,HE,AS,ZC,GR12.9	2
	10	110-4123 NUT, NYLOC, M6x1, HE, AS, NKL, Gr-10.9	2
H	11	110-4178 SCREW, 5/16-18, 1 1/4", HHC, HE, AS, ZP, SERRATED FLANGE, CL8.8	1
	12	120-0425 WASHER, FLAT, 1/4x7/8ODx.047	2
	13	120-3030 WASHER, 1/2 X 1.0625 OD X .093	2
	14	731-7105 WASHER, M8, BELLEVIEW LOCK	1
	15	130-1784 BELT, 200J6, POLY-V	1
G	16	130-1787 SPROCKET, IDLER, Ø.5"ID, 15T, #40	1
	17	130-1791 ASSY, SPROCKET, Ø5/8"ID, 14T, #40	1
	18	140-3491 SPRING, EXT, OD: 15.85mm, SD: 1.75mm, RNG: 25.5-45.5mm	1
	19	140-3717 KEY, MACHINE, 5x5x20, UNDERSIZE	1
F	20	260-0958 BRAKE, POWER-OFF, SM	1
	21	260-0976 SPROCKET, HUB, 15mm ID, CHAIN TAIL, ABS0S8AA	1
	22	711-3329 ISOLATOR, GEARBOX, RUBBER, STARMILL	1
	23	711-3334 GEARBOX, 19:1, BISON	1
	24	711-3336 ARM, TENSION, CHAIN, E-SM	1
E	25	711-3361 ASSY,W/ COUNTER, ALTERNATOR, 1.5" PULLEY	1
	26	711-3426 KEY, 0.190 X 0.190 X .500	1
	27	711-3506 ASSY, CATCH W/ INSERT, GEARBOX, BISON, GAUNTLET	1
	28	711-3710 BRACKET, 8G, DRIVE, MK3, WHISPER	1
D	29	711-3711 PULLEY, OUTPUT SHAFT, 8G, MK3	1
	30	711-3715 WMT, TENSIONER, 8G, WHISPER	1
	31	711-3719 ASSY, HARMONIC DAMPER, 8G, WHISPER DRIVE	1
	32	711-3720 ASSY, SHAFT W/HOUSING, 8G, WHISPER	1
	33	110-3315 SCREW, SET, PATCH, 1/4-20 X 3/8	2
C	34	731-6444 WASHER,FENDER,M6,NKL	3
	35	731-6869 Set Screw M4 X 0.7 X 5 MM	1
	36	731-7522 SCREW, M5x0.8, 25mm, SHC, HK, AS, NKL,GR-10.9	3
	37	740-0013 NUT, M5x0.8, SS, NYLOC	3
	38	110-4283 WASHER, M4, 8X19X3.5, CS, ZP	1
B	39	110-4284 SCREW,M5X0.8,10MM,SHCS,HK,AS,BO,FT	1

REVISION HISTORY				
REV	DATE	DESCRIPTION	ECO	BY
A	2/27/2019	INITIAL RELEASE	16078	BA
B	2/13/2020	ADDED ITEMS 38 AND 39, UPDATED NOTES AND RENUMBERING	16321	AM



DOCUMENT STATUS:

NOTICE OF PROPRIETARY INFORMATION
 THIS DOCUMENT SHALL NOT BE REPRODUCED NOR SHALL THE INFORMATION CONTAINED HEREIN BE USED BY OR DISCLOSED TO OTHER EXCEPT AS EXPRESSLY AUTHORIZED BY CORE HEALTH & FITNESS, LLC.

CLASS OF WORK	UNLESS OTHERWISE SPECIFIED DIMS ARE IN mm. TOLERANCES FOR MEASURE OF LENGTH ARE:								ANGLES = ±2°
	0.5 to 3	> 3 to 6	> 6 to 30	> 30 to 120	> 120 to 400	> 400 to 1000	> 1000 to 2000	> 2000	
FINE	±0.05	±0.05	±0.1	±0.15	±0.2	±0.3	±0.5	----	
MEDIUM	±0.1	±0.1	±0.2	±0.3	±0.5	±0.8	±1.2	±2	
COARSE	±0.2	±0.3	±0.5	±0.8	±1.2	±2	±3	±4	
VERY COARSE	----	±0.5	±1	±1.5	±2.5	±4	±6	±8	

MATERIAL SEE BOM

FINISH SEE NOTES

VENDOR: P/N:

THIRD ANGLE PROJECTION		
DRAWN	INITIAL B. ALVEY	DATE 02/26/2019
CHECKED		
APPROVED		

CORE HEALTH & FITNESS, LLC
 4400 NE 77th Ave., Suite 300
 Vancouver, WA 98662

CORE PART NO: **711-3712** REV: **B**

TITLE: **ASSY, DRIVE, 8G, MK3, WHISPER**

SCALE: 1:3 | SHEET 1 OF 4 | SHEET SIZE: B

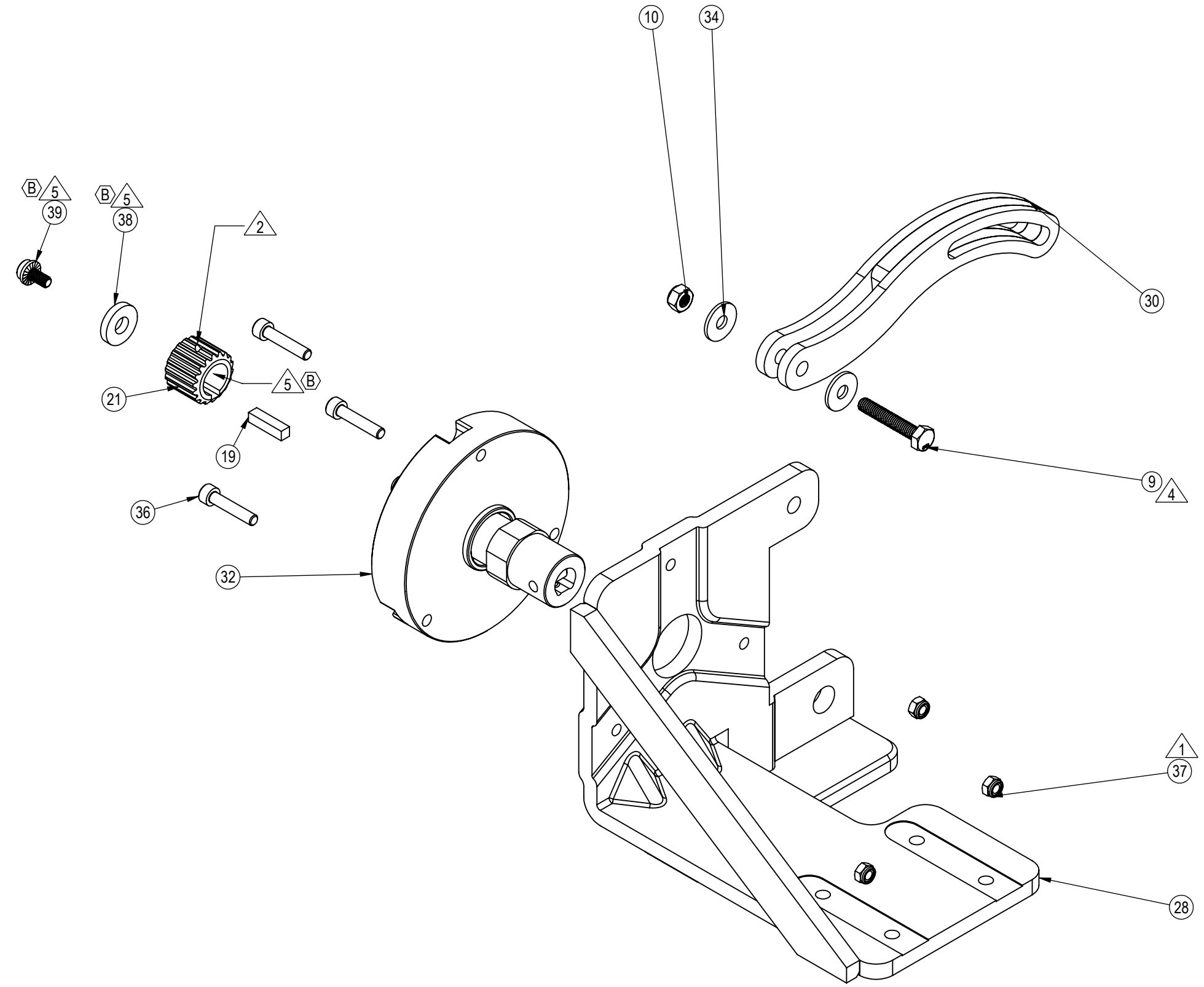
9 8 7 6 5 4 3 2 1

NOTES: **B**

- 1** TORQUE TO 12Nm (8.8 FT-LB)
- 2** TORQUE TO 2.1Nm (19 in-LB)
- 3** TORQUE TO 7.7Nm (68 in-LB)
- 4** TORQUE TO 15Nm (11 FT-LB) AFTER TENSIONING BELT.
- 5** APPLY LOCTITE #680 PRIOR TO ASSEMBLY

J
I
H
G
F
E
D
C
B
A

J
I
H
G
F
E
D
C
B
A

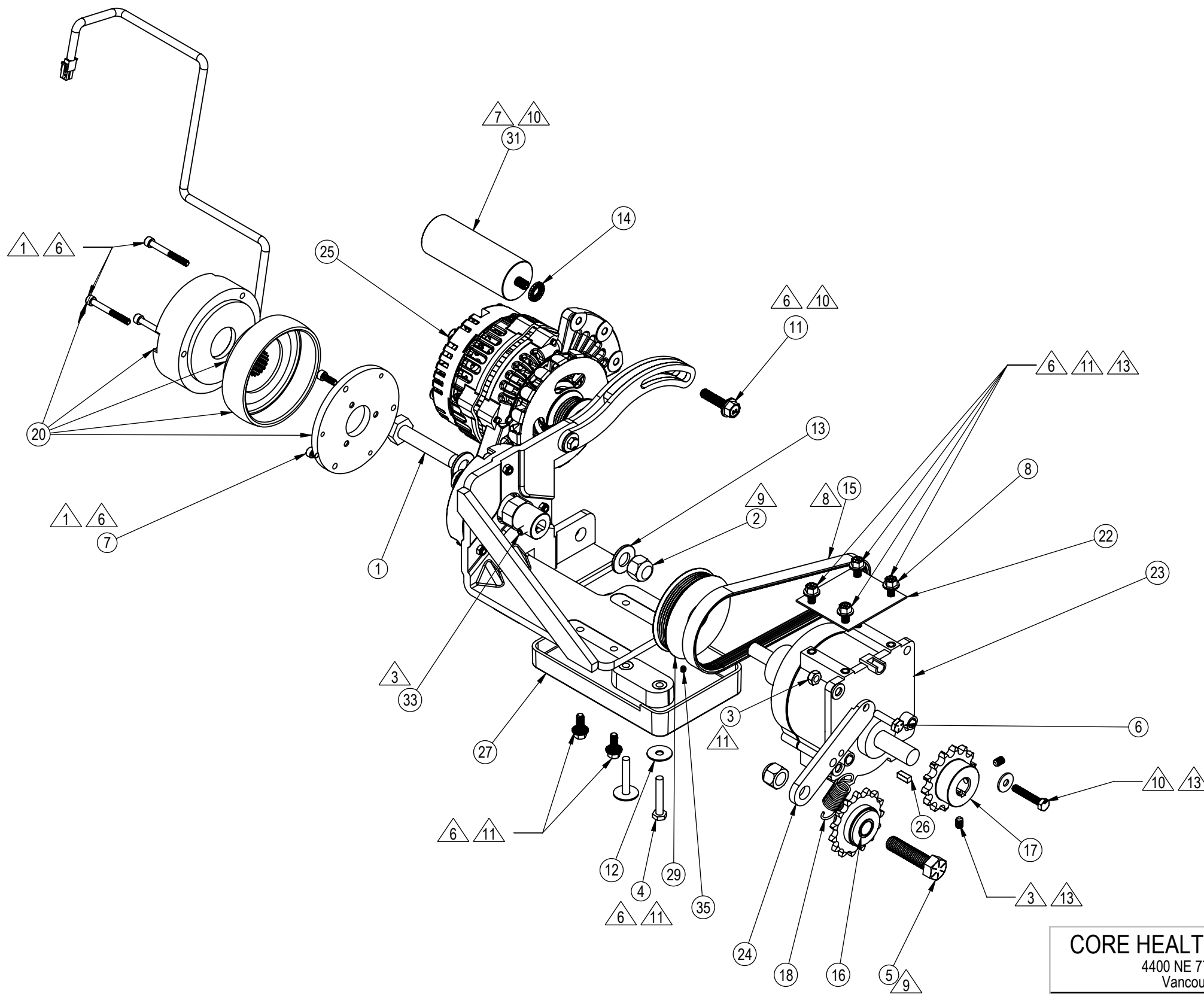


CORE HEALTH & FITNESS, LLC 4400 NE 77th Ave., Suite 300 Vancouver, WA 98662	
CORE PART NO 711-3712	REV B
TITLE ASSY, DRIVE, 8G, MK3, WHISPER	
SCALE: 1:2	SHEET 2 OF 4 SHEET SIZE: B

9 8 7 6 5 4 3 2 1

NOTES: (B)

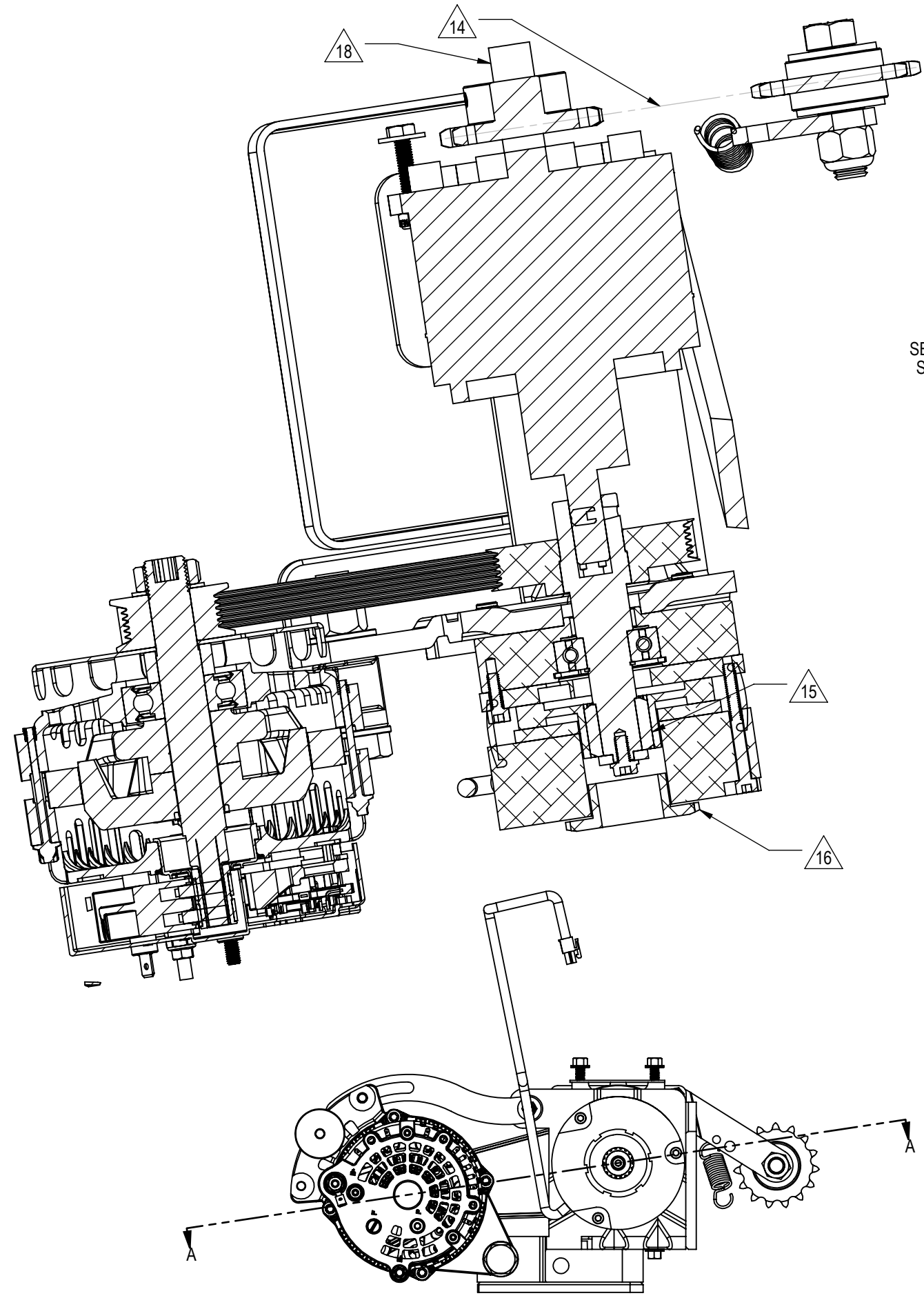
- △6 APPLY 0.2mL LOCTITE #243 PRIOR TO ASSEMBLY.
- △7 APPLY 0.2mL LOCTITE #263 PRIOR TO ASSEMBLY.
- △8 TENSION BELT TO 50-55Hz
- △9 TORQUE TO 41Nm (30 FT-LB) AFTER TENSIONING BELT.
- △10 TORQUE TO 24Nm (18 FT-LB)
- △11 TORQUE TO 12.2Nm (9FT-LB)
- △12 INSTALL UNTIL SNUG, THEN BACK OFF NUT 2 TURNS
- △13 FULLY TIGHTEN AT INSTALLATION



CORE HEALTH & FITNESS, LLC		
4400 NE 77th Ave., Suite 300 Vancouver, WA 98662		
<small>CORE PART NO</small>	<small>REV</small>	
711-3712	B	
<small>TITLE</small>		
ASSY, DRIVE, 8G, MK3, WHISPER		
<small>SCALE: 1:4</small>	<small>SHEET 3 OF 4</small>	<small>SHEET SIZE: B</small>

NOTES: (B)

- 14 ALIGN AT ASSEMBLY INTO MACHINE.
- 15 APPLY 0.2mL "SUPER LUBE" SILICONE GREASE.
- 16 BACK OFF BRAKE PRELOAD 1/8 TURN. VERIFY EVEN PRESSURE PLATE RETARCTION BY MANUALLY RETRACTING BRAKE.
- 17 AFTER ASSEMBLING: BREAK IN ASSEMBLY; SWEEPING FROM 0-8900 ALTERNATOR RPM FOR 5MIN WITH BRAKE POWERED AT 24VDC.
- 18 AFTER BREAK-IN, MANUALLY RETRACT BRAKE AND VERIFY NO-LOAD STARTUP TORQUE AT IS 6.7Nm (60 IN-LB) OR LESS.



SECTION A-A
SCALE 1:2

CORE HEALTH & FITNESS, LLC
4400 NE 77th Ave., Suite 300
Vancouver, WA 98662

CORE PART NO	711-3712	REV	B
TITLE			
ASSY, DRIVE, 8G, MK3, WHISPER			
SCALE: 1:4	SHEET 4 OF 4	SHEET SIZE: B	